



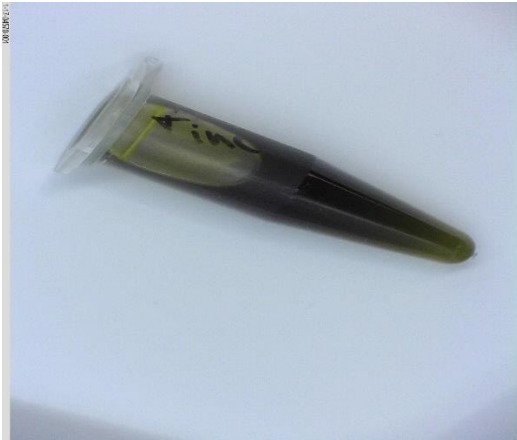
Certificate of Analysis

1 (2)

Ace Analytical Laboratory

MME: Alternative Medicine Association
 MME ID: P096
 Strain: PET TINCTURE
 Batch: PR090117PT
 Lot: NA

Laboratory ID: 11704570001
 Unit Size: 27.3g
 Product: Edible
 Collection Date: 9-01-17/12:55 PM
 Received Date: 9-01-17/3:05 PM



Potency Results	mg/g
THC*	0.00
CBD*	7.65
CBN	0.00
Total Cannabinoids	7.80
THC mg/unit*	0.00
CBD mg/unit*	208.85

*Active THC, does not include THCA

*Active CBD, does not include CBDA

Terpene	mg/g
α-Bisabolol	0.00
α-Humulene	0.00
α-Pinene	0.00
α-Terpinene	0.00
β-Caryophyllene	0.00
β-Myrcene	0.00
β-Pinene	0.00
Camphene	0.00
Caryophyllene Oxide	0.00
Δ-3-Carene	0.00
Eucalyptol	0.00
γ-Terpinene	0.00
Geraniol	0.00
Guaiol	0.00
Isopulegol	0.00
Limonene	0.00
Linalool	0.00
Nerolidol (α/β)	0.00
Ocimene (α/β)	0.00
p-Cymene	0.00
Terpinolene	0.00

Cannabinoid	mg/g
CBC	0.06
CBD	7.65
CBDA	0.09
CBDV	0.00
CBG	0.00
CBGA	0.00
CBN	0.00
Δ8-THC	0.00
Δ9-THC	0.00
THCA	0.00
THCV	0.00

Cannabinoid results based on "as received" sample

Quality Assurance Tests	Results
Visual Inspection	PASS
Microbial Screening	PASS

Darryl Johnson, PhD

9/01/2017

This signature indicates the above material has been reviewed and certified



Certificate of Analysis

1 (2)

Ace Analytical Laboratory

Microbial Screening	Results (CFU/g)	Limits (CFU/g)
Yeast and Mold	0	10,000
Salmonella	0	0
Total Aerobic Count	0	100,000
Enterobacteriaceae	0	1,000
Total Coliforms	0	1,000
E. coli	0	0

CFU/g: colony forming units per gram